

HIV/AIDS Epidemiologic Surveillance Report

AIDS and HIV Cases Reported Through 12/31/10

San Diego County

Prepared by Community Epidemiology
Public Health Services, Health and Human Services Agency, County of San Diego
March 2010 – DRAFT 03/10/11

Table of Contents

<u>AIDS Cases</u>	3
AIDS Cases by Gender and Race/Ethnicity (Cumulative and Recent Cases), with Rate per 100,000.....	4
Adult/Adolescent Cases: Mode of Transmission by Race/Ethnicity (Cumulative Cases)	5
Adult/Adolescent Cases: Mode of Transmission by Race/Ethnicity (Recent Cases).....	5
Adult/Adolescent Cases: Race/Ethnicity by Mode of Transmission (Cumulative Cases)	6
Adult/Adolescent Cases: Race/Ethnicity by Mode of Transmission (Recent Cases).....	6
7	
Pediatric Cases: Mode of Transmission by Race/Ethnicity (Cumulative Cases)	7
Pediatric Cases: Race/Ethnicity by Mode of Transmission (Cumulative Cases)	7
AIDS Cases by Region : Number and Percent (Cumulative and Recent Cases)	8
AIDS Cases: Gender by Region : Number and Percent (Cumulative and Recent Cases).....	8
Central San Diego : Comparison of Countywide and Regional Cases (Cumulative and Recent) by Mode of Transmission, Race/Ethnicity, Gender and Age	9
East County : Comparison of Countywide and Regional Cases (Cumulative and Recent) by Mode of Transmission, Race/Ethnicity, Gender and Age	10
North County : Comparison of Countywide and Regional Cases (Cumulative and Recent) by Mode of Transmission, Race/Ethnicity, Gender and Age	11
South Bay : Comparison of Countywide and Regional Cases (Cumulative and Recent) by Mode of Transmission, Race/Ethnicity, Gender and Age	12
Southeast San Diego : Comparison of Countywide and Regional Cases (Cumulative and Recent) by Mode of Transmission, Race/Ethnicity, Gender and Age.....	13
Regional Proportion of Cases by Five Year Cohort, 1981-2010	14
Individuals Diagnosed and Living with AIDS at Year End, 1981-2010	15
Countywide	15
Central San Diego.....	16
East Region	16

North County	17
South Bay.....	17
Southeast San Diego	18
<u>HIV (non-AIDS) Cases</u>	19
Adult/Adolescent Cases: Mode of Transmission by Race/Ethnicity (Cumulative Cases)	20
Adult/Adolescent Cases: Mode of Transmission by Race/Ethnicity (Recent Cases).....	20
Adult/Adolescent Cases: Race/Ethnicity by Mode of Transmission (Cumulative Cases)	21
Adult/Adolescent Cases: Race/Ethnicity by Mode of Transmission (Recent Cases).....	21
Pediatric Cases: Mode of Transmission by Race/Ethnicity	22
Pediatric Cases: Race/Ethnicity by Mode of Transmission	22
HIV (non-AIDS) Cases by Region : Number and Percent	23
HIV (non-AIDS) Cases: Gender by Region : Number and Percent	23
HIV (non-AIDS) Cases: Gender by Race/Ethnicity : Number and Percent	24
Central San Diego : Comparison of Countywide and Regional Cases (Cumulative and Recent) by Mode of Transmission, Race/Ethnicity, Gender and Age	25
East County : Comparison of Countywide and Regional Cases by Mode of Transmission, Race/Ethnicity, Gender and Age.....	26
North County : Comparison of Countywide and Regional Cases by Mode of Transmission, Race/Ethnicity, Gender and Age.....	27
South Bay : Comparison of Countywide and Regional Cases by Mode of Transmission, Race/Ethnicity, Gender and Age.....	28
Southeast San Diego : Comparison of Countywide and Regional Cases by Mode of Transmission, Race/Ethnicity, Gender and Age	29

AIDS Cases

NOTES:

- Cumulative Cases
 - Cases diagnosed and reported to the Community Epidemiology Branch through December 31, 2010

- Recent Cases
 - Cases diagnosed January 1, 2009 – December 31, 2010 and reported to the Community Epidemiology Branch through December 31, 2010

- Residency
 - Resident of San Diego County at time of AIDS diagnosis; all regional analysis is based upon zip code at time of AIDS diagnosis

**San Diego County AIDS Cases
Rate per 100,000
By Gender and Race/Ethnicity
Reported through December 31, 2010**

	Cumulative Cases				Recent Cases*					
	Male		Female		Male			Female		
	Number	Percent	Number	Percent	Number	Percent	Rate**	Number	Percent	Rate**
White	8268	61.7%	431	36.9%	256	42.8%	16.1	17	29.3%	1.1
Black	1564	11.7%	298	25.5%	79	13.2%	45.2	16	27.6%	10.1
Hispanic	3197	23.8%	379	32.5%	237	39.6%	24.7	23	39.7%	2.4
Asian/Other***	379	2.9%	59	5.1%	26	4.3%	6.0	2	3.4%	#
TOTAL	13,408	100.0%	1167	100.0%	598	100.0%	18.8	58	100.0%	1.8

* Cases diagnosed during the period January 1, 2009 through December 31, 2010

** Average yearly rate per 100,000 population over 2009 and 2010, using 2009 population estimates from SanDAG, released January 2010

*** AIDS and population data includes individuals of Asian, Pacific Islander and Native American heritage

Unable to calculate rate due to small cell size

Percent may not total 100 due to rounding

Epidemiology and Immunization Services, February 2011

**San Diego County Adult/Adolescent AIDS Cases (Cumulative)
Mode of Transmission by Race/Ethnicity
Reported through December 31, 2010**

	White		Black		Hispanic		Asian/Pac Islander		Native American		TOTAL	
	Number	Percent	Number	Percent	Number	Percent	Number	Percent	Number	Percent	Number	Percent
MSM*	6772	64.2%	1018	9.6%	2455	23.3%	238	2.3%	69	0.7%	10,552	100.0%
IDU**	540	42.3%	349	27.3%	360	28.2%	12	0.9%	16	1.3%	1277	100.0%
MSM+IDU	929	62.7%	215	14.5%	295	19.9%	22	1.5%	20	1.4%	1481	100.0%
Hemophilia	48	72.7%	3	4.5%	14	21.2%	1	1.5%	0	0.0%	66	100.0%
Heterosexual	283	30.5%	240	25.8%	359	38.6%	43	4.6%	4	0.4%	929	100.0%
Transfusion	95	61.3%	14	9.0%	37	23.9%	9	5.8%	0	0.0%	155	100.0%
NRS/Other***	16	42.1%	5	13.2%	16	42.1%	0	0.0%	1	2.6%	38	100.0%
Parent with HIV/AIDS	2	22.2%	1	11.1%	5	55.6%	1	11.1%	0	0.0%	9	100.0%

Cumulative AIDS Cases (DX: January 1981 – December 2010) Percent may not total 100 due to rounding
 *Men having Sex with Men **Injection Drug Use
 Epidemiology and Immunization Services, February 2011 ***No Risk Specified/Other Confirmed

**San Diego County Adult/Adolescent AIDS Cases (Recently Diagnosed)
Mode of Transmission by Race/Ethnicity
Reported through December 31, 2010**

	White		Black		Hispanic		Asian/Pac Islander		Native American		TOTAL	
	Number	Percent	Number	Percent	Number	Percent	Number	Percent	Number	Percent	Number	Percent
MSM*	198	41.9%	58	12.3%	194	41.0%	18	3.8%	5	1.1%	473	100.0%
IDU**	18	43.9%	9	22.0%	13	31.7%	1	2.4%	0	0.0%	41	100.0%
MSM+IDU	26	53.1%	8	16.3%	14	28.6%	1	2.0%	0	0.0%	49	100.0%
Hemophilia	1	50.0%	1	50.0%	0	0.0%	0	0.0%	0	0.0%	2	100.0%
Heterosexual	27	32.9%	17	20.7%	35	42.7%	2	2.4%	1	1.2%	82	100.0%
Transfusion	0	0.0%	0	0.0%	0	0.0%	0	0.0%	0	0.0%	0	
NRS/Other***	3	42.9%	1	14.3%	3	42.9%	0	0.0%	0	0.0%	7	100.0%
Parent with HIV/AIDS	0	0.0%	1	100.0%	0	0.0%	0	0.0%	0	0.0%	1	100.0%

Recently Diagnosed AIDS Cases (DX: January 2009 – December 2010) Percent may not total 100 due to rounding
 *Men having Sex with Men **Injection Drug Use
 Epidemiology and Immunization Services, February 2011 ***No Risk Specified/Other Confirmed

**San Diego County Adult/Adolescent AIDS Cases (Cumulative)
Race/Ethnicity by Mode of Transmission
Reported through December 31, 2010**

	White		Black		Hispanic		Asian/Pac Islander		Native American	
	Number	Percent	Number	Percent	Number	Percent	Number	Percent	Number	Percent
MSM*	6772	78.0%	1018	55.2%	2455	69.3%	238	73.0%	69	62.7%
IDU**	540	6.2%	349	18.9%	360	10.2%	12	3.7%	16	14.5%
MSM+IDU	929	10.7%	215	11.7%	295	8.3%	22	6.7%	20	18.2%
Hemophilia	48	0.6%	3	0.2%	14	0.4%	1	0.3%	0	0.0%
Heterosexual	283	3.3%	240	13.0%	359	10.1%	43	13.2%	4	3.6%
Transfusion	95	1.1%	14	0.8%	37	1.0%	9	2.8%	0	0.0%
NRS/Other***	16	0.2%	5	0.3%	16	0.5%	0	0.0%	1	0.9%
Parent with HIV/AIDS	2	0.0%	1	0.1%	5	0.1%	1	0.3%	0	0.0%
TOTAL	8685	100.0%	1845	100.0%	3541	100.0%	326	100.0%	110	100.0%

Cumulative AIDS Cases (DX: January 1981 – December 2010)

**San Diego County Adult/Adolescent AIDS Cases (Recently Diagnosed)
Race/Ethnicity by Mode of Transmission
Reported through December 31, 2010**

	White		Black		Hispanic		Asian/Pac Islander		Native American	
	Number	Percent	Number	Percent	Number	Percent	Number	Percent	Number	Percent
MSM*	198	72.5%	58	61.1%	194	74.9%	18	90.0%	5	62.5%
IDU**	18	6.6%	9	9.5%	13	5.0%	0	0.0%	1	12.5%
MSM+IDU	26	9.5%	8	8.4%	14	5.4%	0	0.0%	1	12.5%
Hemophilia	1	0.4%	1	1.1%	0	0.0%	0	0.0%	0	0.0%
Heterosexual	27	9.9%	17	17.9%	35	13.5%	2	10.0%	1	12.5%
Transfusion	0	0.0%	0	0.0%	0	0.0%	0	0.0%	0	0.0%
NRS/Other***	3	1.1%	1	1.1%	3	1.2%	0	0.0%	0	0.0%
Parent with HIV/AIDS	0	0.0%	1	1.1%	0	0.0%	0	0.0%	0	0.0%
TOTAL	273	100.0%	95	100.0%	259	100.0%	20	100.0%	8	100.0%

Recently diagnosed AIDS Cases (DX: January 2009 – December 2010)

Percent may not total 100 due to rounding

*Men having Sex with Men

**Injection Drug Use

Epidemiology and Immunization Services, February 2011

***No Risk Specified/Other Confirmed

**San Diego County Pediatric AIDS Cases
Mode of Transmission by Race/Ethnicity
Reported through December 31, 2010**

	White		Black		Hispanic		Asian/Pac Islander		TOTAL	
	Number	Percent	Number	Percent	Number	Percent	Number	Percent	Number	Percent
Parent at risk/with HIV/AIDS	8	14.0%	17	29.8%	30	52.6%	2	3.5%	57	100.0%
Hemophilia	2	66.7%	0	0.0%	1	33.3%	0	0.0%	3	100.0%
Transfusion	4	50.0%	0	0.0%	4	50.0%	0	0.05	8	100.0%

Cumulative AIDS Cases (DX: January 1981 – December 2010)

Recently diagnosed pediatric AIDS case data is not presented due to small numbers.

**San Diego County Pediatric AIDS Cases
Race/Ethnicity by Mode of Transmission
Reported through December 31, 2010**

	White		Black		Hispanic		Asian/Pac Islander	
	Number	Percent	Number	Percent	Number	Percent	Number	Percent
Parent at risk/with HIV/AIDS	8	57.1%	17	100.0%	30	85.7%	2	100.0%
Hemophilia	2	14.3%	0	0.0%	1	2.9%	0	0.0%
Transfusion	4	28.6%	0	0.0%	4	11.4%	0	0.0%
TOTAL	14	100.0%	17	100.0%	35	100.0%	2	100.0%

Cumulative AIDS Cases (DX: January 1981 – December 2010)

Recently diagnosed pediatric AIDS case data is not presented due to small numbers.

Percent may not total 100 due to rounding

Epidemiology and Immunization Services, February 2011

**San Diego County AIDS Cases
By Region*
Reported through December 31, 2009**

	Cumulative Cases		Recent Cases**	
	Number	Percent	Number	Percent
Central San Diego	8737	61.4%	344	51.3%
East County	1033	7.3%	69	10.3%
North County	1683	11.8%	90	13.4%
South Bay	1532	10.8%	126	18.8%
Southeast San Diego	1243	8.7%	42	6.3%
TOTAL	14228	100.0%	671	100.0%

*As defined by the HIV, STD, and Hepatitis Branch (HSHB)

**Cases diagnosed during the period January 1, 2008 – December 31, 2009

Percent may not total 100 due to rounding

Epidemiology and Immunization Services, April 2010

**San Diego County AIDS Cases
Gender by Region*
Reported through December 31, 2009**

	Cumulative Cases				Recent Cases**			
	Male		Female		Male		Female	
	No.	%	No.	%	No.	%	No.	%
Central San Diego	8285	63.3%	452	39.6%	321	53.7%	23	31.5%
East County	916	7.0%	117	10.3%	58	9.7%	11	15.1%
North County	1459	11.1%	224	19.7%	81	13.5%	9	12.3%
South Bay	1336	10.2%	196	17.2%	110	18.4%	16	21.9%
Southeast San Diego	1091	8.3%	152	13.3%	28	4.7%	14	19.2%
TOTAL	13087	100.0%	1141	100.0%	598	100.0%	73	100.0%

*As defined by the HIV, STD, and Hepatitis Branch (HSHB)

**Cases diagnosed during the period January 1, 2008 – December 31, 2009

Percent may not total 100 due to rounding

Epidemiology and Immunization Services, April 2010

Region: Central San Diego

	Countywide				Region: Central San Diego			
	Cumulative Cases		Recent Cases		Cumulative Cases		Recent Cases	
	No.	%	No.	%	No.	%	No.	%
Mode of Transmission – Adult								
Men having Sex with Men (MSM)	10,552	72.7%	473	72.1%	6926	77.8%	271	76.1%
Injection Drug Use (IDU)	1,277	8.8%	41	6.3%	556	6.2%	19	5.3%
MSM+IDU	1,481	10.2%	49	7.5%	974	10.9%	32	9.0%
Hemophilia	66	0.5%	2	0.4%	24	0.3%	1	0.3%
Heterosexual	929	6.4%	82	12.5%	353	4.0%	29	8.1%
Transfusion	155	1.1%	0	0.0%	56	0.6%	0	0.0%
No Risk Specified/Other	38	0.3%	7	1.1%	13	0.1%	3	0.8%
Parent at risk/with HIV/AIDS	9	0.1%	1	0.2%	2	0.0%	1	0.3%
Mode of Transmission – Pediatric								
Parent at risk/with HIV/AIDS	57	83.8%	1	100.0%	25	92.6%	0	0.0%
Pediatric Hemophilia	3	4.4%	0	0.0%	1	3.7%	0	0.0%
Pediatric Transfusion	8	11.8%	0	0.0%	1	3.7%	0	0.0%
Race/Ethnicity								
White	8699	59.7%	273	41.6%	6112	68.4%	176	49.4%
Black	1862	12.8%	95	14.5%	1056	11.8%	55	15.4%
Hispanic	3576	24.5%	260	39.6%	1533	17.2%	106	29.8%
Asian/Pacific Islander	328	2.3%	20	3.0%	162	1.8%	15	4.2%
Native American	110	0.8%	8	1.2%	68	0.8%	4	1.1%
Gender								
Male	13,408	92.0%	598	91.2%	8471	94.8%	339	95.2%
Female	1,167	8.0%	58	8.8%	460	5.2%	17	4.8%
Age Group								
0-12	68	0.5%	1	0.2%	27	0.3%	0	0.0%
13-19	67	0.5%	3	0.5%	23	0.3%	1	0.3%
20-29	2353	16.1%	97	14.8%	1426	16.0%	46	12.9%
30-39	6335	43.5%	205	31.3%	4008	44.9%	103	28.9%
40-49	4045	27.8%	226	34.5%	2507	28.1%	135	37.9%
50+	1707	11.7%	124	18.9%	940	10.5%	71	20.0%
TOTAL	14,575	100.0%	656	100.0%	8931	100.0%	356	100.0%

Epidemiology and Immunization Services, February 2011

Region: East

	Countywide				Region: East			
	Cumulative Cases		Recent Cases		Cumulative Cases		Recent Cases	
	No.	%	No.	%	No.	%	No.	%
Mode of Transmission – Adult								
Men having Sex with Men (MSM)	10,552	72.7%	473	72.1%	688	65.4%	40	69.0%
Injection Drug Use (IDU)	1,277	8.8%	41	6.3%	135	12.8%	6	10.3%
MSM+IDU	1,481	10.2%	49	7.5%	92	8.7%	0	0.0%
Hemophilia	66	0.5%	2	0.4%	18	1.7%	0	0.0%
Heterosexual	929	6.4%	82	12.5%	94	8.9%	12	20.7%
Transfusion	155	1.1%	0	0.0%	20	1.9%	0	0.0%
No Risk Specified/Other	38	0.3%	7	1.1%	3	0.3%	0	0.0%
Parent at risk/with HIV/AIDS	9	0.1%	1	0.2%	2	0.2%	0	0.0%
Mode of Transmission – Pediatric								
Parent at risk/with HIV/AIDS	57	83.8%	1	100.0%	3	75.0%	0	0.0%
Pediatric Hemophilia	3	4.4%	0	0.0%	1	25.0%	0	0.0%
Pediatric Transfusion	8	11.8%	0	0.0%	0	0.0%	0	0.0%
Race/Ethnicity								
White	8699	59.7%	273	41.6%	668	63.3%	31	53.4%
Black	1862	12.8%	95	14.5%	133	12.6%	11	19.0%
Hispanic	3576	24.5%	260	39.6%	218	20.6%	16	27.6%
Asian/Pacific Islander	328	2.3%	20	3.0%	26	2.5%	0	0.0%
Native American	110	0.8%	8	1.2%	11	1.0%	0	0.0%
Gender								
Male	13,408	92.0%	598	91.2%	934	88.4%	47	81.0%
Female	1,167	8.0%	58	8.8%	122	11.6%	11	19.0%
Age Group								
0-12	68	0.5%	1	0.2%	4	0.4%	0	0.0%
13-19	67	0.5%	3	0.5%	10	0.9%	1	1.7%
20-29	2353	16.1%	97	14.8%	168	15.9%	12	20.7%
30-39	6335	43.5%	205	31.3%	421	39.9%	13	22.4%
40-49	4045	27.8%	226	34.5%	301	28.5%	19	32.8%
50+	1707	11.7%	124	18.9%	152	14.4%	13	22.4%
TOTAL	14,575	100.0%	656	100.0%	1056	100.0%	58	100.0%

Epidemiology and Immunization Services, February 2011

Region: North

	Countywide				Region: North			
	Cumulative Cases		Recent Cases		Cumulative Cases		Recent Cases	
	No.	%	No.	%	No.	%	No.	%
Mode of Transmission – Adult								
Men having Sex with Men (MSM)	10,552	72.7%	473	72.1%	1119	65.4%	54	66.7%
Injection Drug Use (IDU)	1,277	8.8%	41	6.3%	208	12.2%	5	6.2%
MSM+IDU	1,481	10.2%	49	7.5%	137	8.0%	5	6.2%
Hemophilia	66	0.5%	2	0.4%	15	0.9%	0	0.0%
Heterosexual	929	6.4%	82	12.5%	177	10.3%	16	19.8%
Transfusion	155	1.1%	0	0.0%	41	2.4%	0	0.0%
No Risk Specified/Other	38	0.3%	7	1.1%	14	0.9%	1	1.2%
Parent at risk/with HIV/AIDS	9	0.1%	1	0.2%	0	0.0%	0	0.0%
Mode of Transmission – Pediatric								
Parent at risk/with HIV/AIDS	57	83.8%	1	100.0%	9	69.2%	0	0.0%
Pediatric Hemophilia	3	4.4%	0	0.0%	0	0.0%	0	0.0%
Pediatric Transfusion	8	11.8%	0	0.0%	4	30.8%	0	0.0%
Race/Ethnicity								
White	8699	59.7%	273	41.6%	1088	63.1%	40	49.4%
Black	1862	12.8%	95	14.5%	132	7.7%	4	4.9%
Hispanic	3576	24.5%	260	39.6%	432	25.1%	34	42.0%
Asian/Pacific Islander	328	2.3%	20	3.0%	52	3.0%	1	1.2%
Native American	110	0.8%	8	1.2%	20	1.2%	2	2.5%
Gender								
Male	13,408	92.0%	598	91.2%	1494	86.7%	71	87.7%
Female	1,167	8.0%	58	8.8%	230	13.3%	10	12.3%
Age Group								
0-12	68	0.5%	1	0.2%	13	0.8%	0	0.0%
13-19	67	0.5%	3	0.5%	9	0.5%	0	0.0%
20-29	2353	16.1%	97	14.8%	260	15.1%	18	22.2%
30-39	6335	43.5%	205	31.3%	691	40.1%	33	40.7%
40-49	4045	27.8%	226	34.5%	494	28.7%	16	19.8%
50+	1707	11.7%	124	18.9%	257	14.9%	14	17.2%
TOTAL	14,575	100.0%	656	100.0%	1724	100.0%	81	100.0%

Epidemiology and Immunization Services, February 2011

Region: South Bay

	Countywide				Region: South Bay			
	Cumulative Cases		Recent Cases		Cumulative Cases		Recent Cases	
	No.	%	No.	%	No.	%	No.	%
Mode of Transmission – Adult								
Men having Sex with Men (MSM)	10,552	72.7%	473	72.1%	1003	63.6%	80	67.8%
Injection Drug Use (IDU)	1,277	8.8%	41	6.3%	186	11.8%	8	6.8%
MSM+IDU	1,481	10.2%	49	7.5%	141	8.9%	7	5.9%
Hemophilia	66	0.5%	2	0.4%	4	0.2%	0	0.0%
Heterosexual	929	6.4%	82	12.5%	207	13.1%	20	16.9%
Transfusion	155	1.1%	0	0.0%	26	1.7%	0	0.0%
No Risk Specified/Other	38	0.3%	7	1.1%	5	0.3%	3	2.5%
Parent at risk/with HIV/AIDS	9	0.1%	1	0.2%	4	0.3%	0	0.0%
Mode of Transmission – Pediatric								
Parent at risk/with HIV/AIDS	57	83.8%	1	100.0%	13	81.3%	0	0.0%
Pediatric Hemophilia	3	4.4%	0	0.0%	1	6.3%	0	0.0%
Pediatric Transfusion	8	11.8%	0	0.0%	2	12.5%	0	0.0%
Race/Ethnicity								
White	8699	59.7%	273	41.6%	399	25.1%	15	12.7%
Black	1862	12.8%	95	14.5%	158	9.9%	12	10.2%
Hispanic	3576	24.5%	260	39.6%	985	61.9%	87	73.7%
Asian/Pacific Islander	328	2.3%	20	3.0%	45	2.8%	2	1.7%
Native American	110	0.8%	8	1.2%	5	0.3%	2	1.7%
Gender								
Male	13,408	92.0%	598	91.2%	1391	87.4%	105	89.0%
Female	1,167	8.0%	58	8.8%	201	12.6%	13	11.0%
Age Group								
0-12	68	0.5%	1	0.2%	16	1.0%	0	0.0%
13-19	67	0.5%	3	0.5%	12	0.8%	1	0.8%
20-29	2353	16.1%	97	14.8%	279	17.5%	13	11.0%
30-39	6335	43.5%	205	31.3%	666	41.8%	41	34.7%
40-49	4045	27.8%	226	34.5%	407	25.6%	43	36.4%
50+	1707	11.7%	124	18.9%	212	13.3%	20	16.9%
TOTAL	14,575	100.0%	656	100.0%	1592	100.0%	118	100.0%

Epidemiology and Immunization Services, February 2011

Region: Southeast San Diego

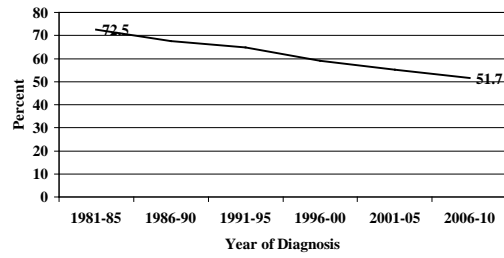
	Countywide				Region: Southeast San Diego			
	Cumulative Cases		Recent Cases		Cumulative Cases		Recent Cases	
	No.	%	No.	%	No.	%	No.	%
Mode of Transmission – Adult								
Men having Sex with Men (MSM)	10,552	72.7%	473	72.1%	816	64.6%	28	66.7%
Injection Drug Use (IDU)	1,277	8.8%	41	6.3%	192	15.2%	3	7.1%
MSM+IDU	1,481	10.2%	49	7.5%	137	10.8%	5	11.9%
Hemophilia	66	0.5%	2	0.4%	5	0.4%	1	2.4%
Heterosexual	929	6.4%	82	12.5%	98	7.8%	5	11.9%
Transfusion	155	1.1%	0	0.0%	12	0.9%	0	0.0%
No Risk Specified/Other	38	0.3%	7	1.1%	3	0.2%	0	0.0%
Parent at risk/with HIV/AIDS	9	0.1%	1	0.2%	1	0.1%	0	0.0%
Mode of Transmission – Pediatric								
Parent at risk/with HIV/AIDS	57	83.8%	1	100.0%	7	87.5%	1	100.0%
Pediatric Hemophilia	3	4.4%	0	0.0%	0	0.0%	0	0.0%
Pediatric Transfusion	8	11.8%	0	0.0%	1	12.5%	0	0.0%
Race/Ethnicity								
White	8699	59.7%	273	41.6%	432	34.0%	11	25.6%
Black	1862	12.8%	95	14.5%	383	30.1%	13	30.2%
Hispanic	3576	24.5%	260	39.6%	408	32.1%	17	39.5%
Asian/Pacific Islander	328	2.3%	20	3.0%	43	3.4%	2	4.7%
Native American	110	0.8%	8	1.2%	6	0.5%	0	0.0%
Gender								
Male	13,408	92.0%	598	91.2%	1118	87.9%	36	83.7%
Female	1,167	8.0%	58	8.8%	154	12.1%	7	16.3%
Age Group								
0-12	68	0.5%	1	0.2%	8	0.6%	1	2.3%
13-19	67	0.5%	3	0.5%	13	1.0%	0	0.0%
20-29	2353	16.1%	97	14.8%	220	17.3%	8	18.6%
30-39	6335	43.5%	205	31.3%	549	43.2%	15	34.9%
40-49	4045	27.8%	226	34.5%	336	26.4%	13	30.2%
50+	1707	11.7%	124	18.9%	146	11.5%	6	14.0%
TOTAL	14,575	100.0%	656	100.0%	1272	100.0%	43	100.0%

Epidemiology and Immunization Services, February 2011

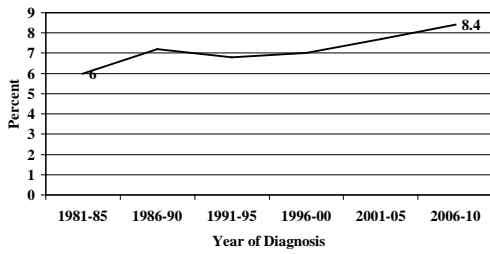
San Diego County AIDS Cases

Regional Proportion of Cases
by Five Year Cohort
Reported through December 31, 2010

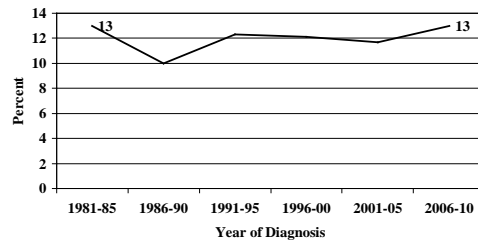
Central Region



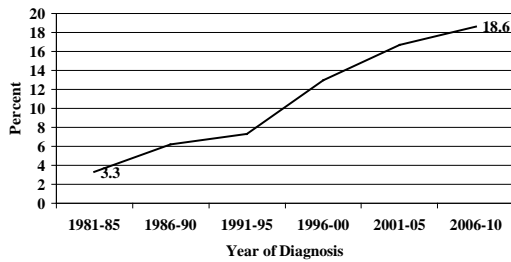
East Region



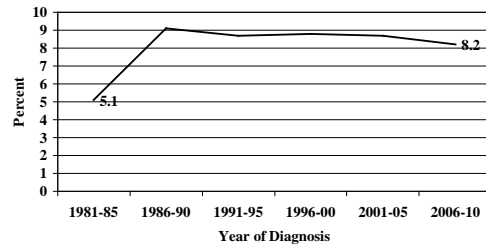
North Region



South Bay Region

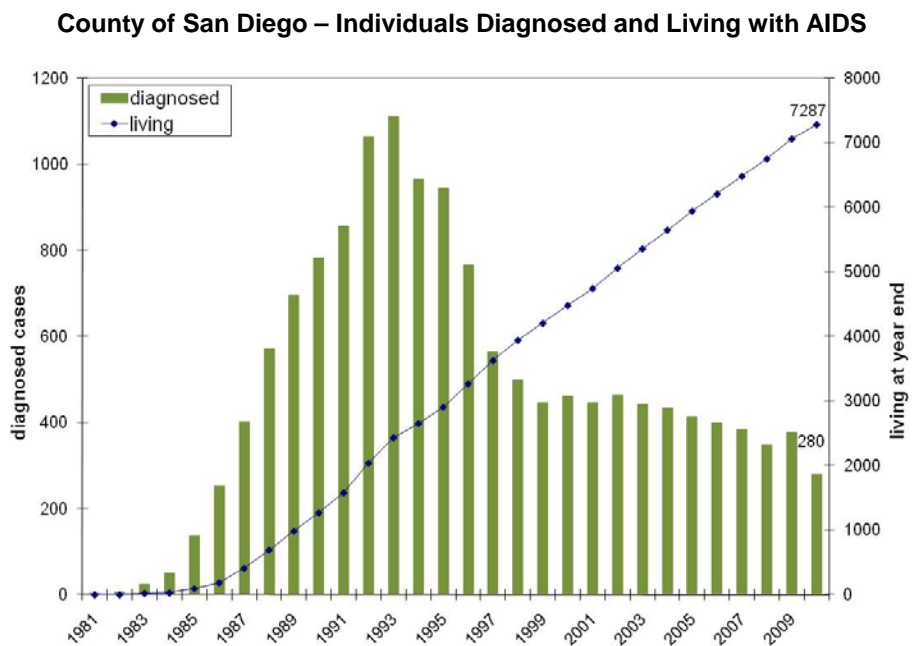


Southeast Region

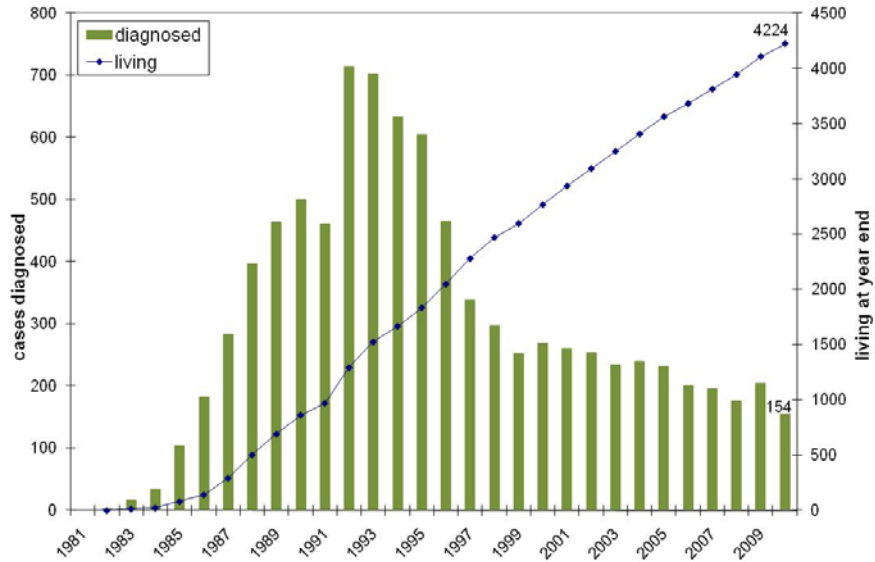


AIDS Cases Diagnosed and Living - 2010

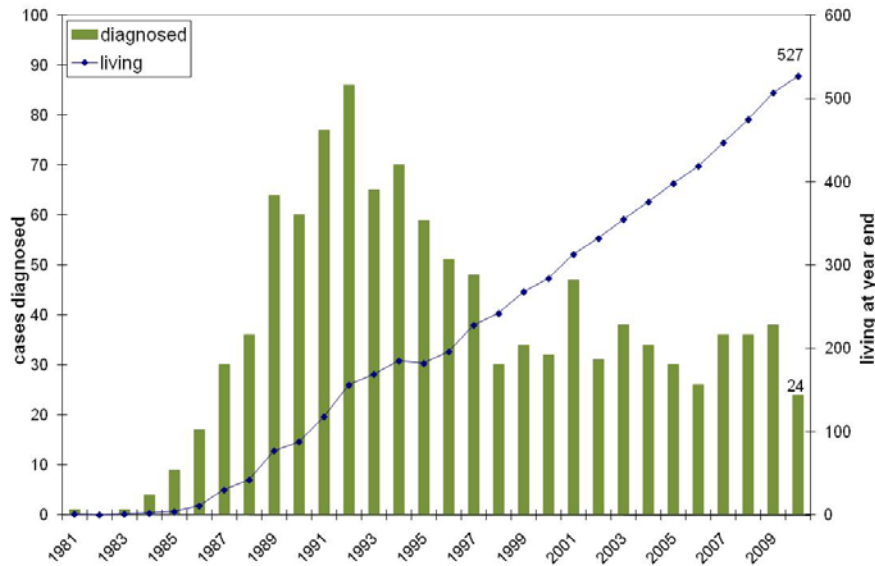
County of San Diego



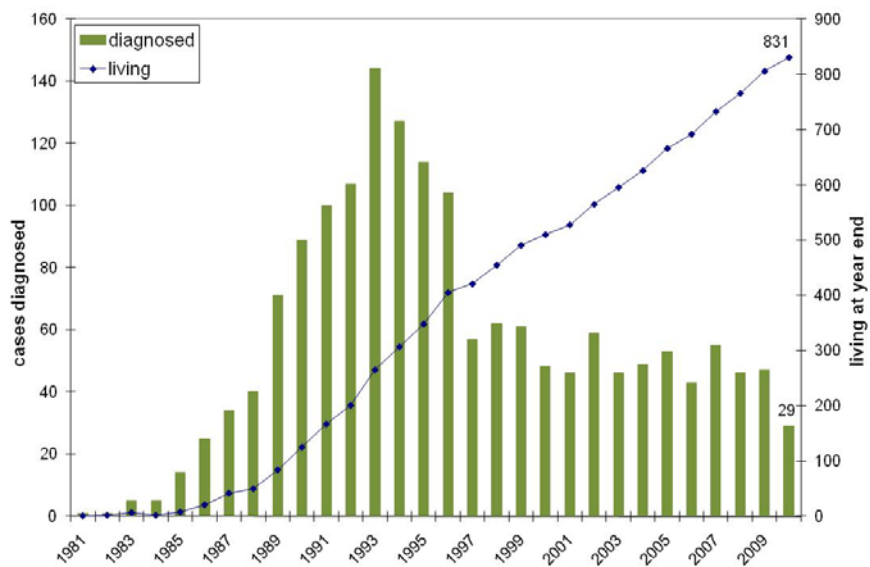
RW Central Region – Individuals Diagnosed and Living with AIDS



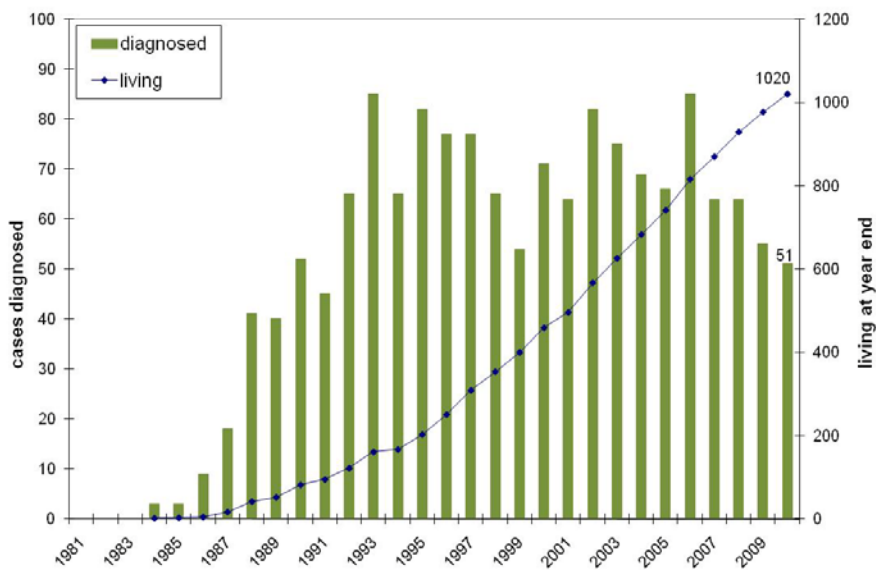
RW East Region – Individuals Diagnosed and Living with AIDS



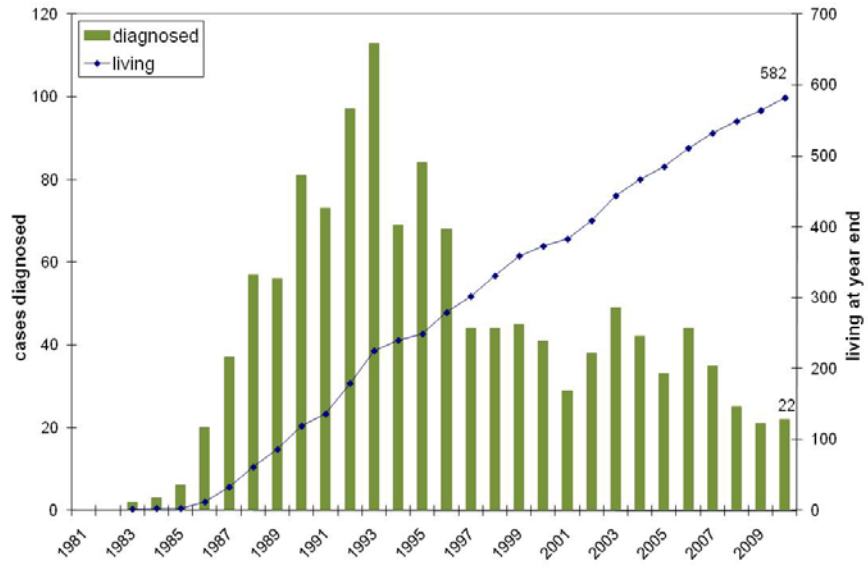
RW North Region – Individuals Diagnosed and Living with AIDS



RW South Bay Region – Individuals Diagnosed and Living with AIDS



RW Southeast Region – Individuals Diagnosed and Living With AIDS



HIV (non-AIDS) Cases

NOTES:

- Names based HIV reporting began on April 17, 2006
- Test indicative of HIV are reportable to the LHJ
- As of December 31, 2010
 - San Diego has reported 4,691 HIV (not-AIDS) cases
 - Los Angeles has reported 17,050 HIV cases
 - San Francisco has reported 5856 HIV cases
 - Orange County has reported 3099 HIV cases
 - California has reported 40,586 HIV cases (as of September 30, 2009)
 - Reflects only those cases that have been reported under the requirement of SB 699 (Names-based HIV reporting)
- Anonymous testing exempt from reporting

**San Diego County Adult/Adolescent HIV (not AIDS) Cases (Cumulative)
Mode of Transmission by Race/Ethnicity
Reported through December 31, 2010**

	White		Black		Hispanic		Asian/Pac Islander		Native American		TOTAL	
	Number	Percent	Number	Percent	Number	Percent	Number	Percent	Number	Percent	Number	Percent
MSM*	2096	59.8%	342	9.8%	929	26.5%	113	3.2%	27	0.8%	3507	100.0%
IDU**	142	49.3%	67	23.3%	71	24.7%	6	2.1%	2	0.7%	288	100.0%
MSM+IDU	205	64.3%	46	14.4%	54	16.9%	10	3.1%	4	1.3%	319	100.0%
Hemophilia	3	75.0%	1	25.0%	0	0.0%	0	0.0%	0	0.0%	4	100.0%
Heterosexual	141	32.5%	118	27.2%	158	36.4%	15	3.5%	2	0.5%	434	100.0%
Transfusion	2	33.3%	3	50.0%	1	16.7%	0	0.0%	0	0.0%	6	100.0%
NRS/Other***	37	38.9%	24	25.3%	30	31.6%	3	3.2%	1	1.1%	95	100.0%

Cumulative HIV (not AIDS) Cases (DX: June 1985 – December 2010)

*Men having Sex with Men

Epidemiology and Immunization Services, February 2011

Percent may not total 100 due to rounding

**Injection Drug Use

***No Risk Specified/Other Confirmed

**San Diego County Adult/Adolescent HIV (not AIDS) Cases (Recently Diagnosed)
Mode of Transmission by Race/Ethnicity
Reported through December 31, 2010**

	White		Black		Hispanic		Asian/Pac Islander		Native American		TOTAL	
	Number	Percent	Number	Percent	Number	Percent	Number	Percent	Number	Percent	Number	Percent
MSM*	245	48.4%	62	12.3%	165	32.6%	29	5.7%	5	1.0%	506	100.0%
IDU**	27	51.9%	8	15.4%	15	28.8%	1	1.9%	1	1.9%	52	100.0%
MSM+IDU	17	65.4%	5	19.2%	3	11.5%	1	3.8%	0	0.0%	26	100.0%
Hemophilia	0	0.0%	0	0.0%	0	0.0%	0	0.0%	0	0.0%	0	
Heterosexual	26	33.3%	17	21.8%	32	41.0%	2	2.6%	1	1.3%	78	100.0%
Transfusion	0	0.0%	1	100.0%	0	0.0%	0	0.0%	0	0.0%	1	100.0%
NRS/Other***	10	35.7%	9	32.1%	9	32.1%	0	0.0%	0	0.0%	28	100.0%

Recently Diagnosed HIV (not AIDS) Cases (DX: January 2009 – December 2010)

*Men having Sex with Men

Epidemiology and Immunization Services, February 2011

Percent may not total 100 due to rounding

**Injection Drug Use

***No Risk Specified/Other Confirmed

**San Diego County Adult/Adolescent HIV (not AIDS) Cases (Cumulative)
Race/Ethnicity by Mode of Transmission
Reported through December 31, 2010**

	White		Black		Hispanic		Asian/Pac Islander		Native American	
	Number	Percent	Number	Percent	Number	Percent	Number	Percent	Number	Percent
MSM*	2096	79.8%	342	56.9%	929	74.7%	113	76.9%	27	75.0%
IDU**	142	5.4%	67	11.1%	71	5.7%	6	4.1%	2	5.6%
MSM+IDU	205	7.8%	46	7.7%	54	4.3%	10	6.8%	4	11.1%
Hemophilia	3	0.1%	1	0.2%	0	0.0%	0	0.0%	0	0.0%
Heterosexual	141	5.4%	118	19.6%	158	12.7%	15	10.2%	2	5.6%
Transfusion	2	0.1%	3	0.5%	1	0.1%	0	0.0%	0	0.0%
NRS/Other***	37	1.4%	24	4.0%	30	2.4%	3	2.0%	1	2.8%
TOTAL	2626	100.0%	601	100.0%	1243	100.0%	147	100.0%	36	100.0%

Cumulative HIV (not AIDS) Cases (DX: June 1985 – December 2010)

**San Diego County Adult/Adolescent HIV (not AIDS) Cases (Recently Diagnosed)
Race/Ethnicity by Mode of Transmission
Reported through December 31, 2010**

	White		Black		Hispanic		Asian/Pac Islander		Native American	
	Number	Percent	Number	Percent	Number	Percent	Number	Percent	Number	Percent
MSM*	245	75.4%	62	60.8%	165	73.7%	29	87.9%	5	71.4%
IDU**	27	8.3%	8	7.8%	15	6.7%	1	3.0%	1	14.3%
MSM+IDU	17	5.2%	5	4.9%	3	1.3%	1	3.0%	0	0.0%
Hemophilia	0	0.0%	0	0.0%	0	0.0%	0	0.0%	0	0.0%
Heterosexual	26	8.0%	17	16.7%	32	14.3%	2	6.1%	1	14.3%
Transfusion	0	0.0%	1	1.0%	0	0.0%	0	0.0%	0	0.0%
NRS/Other***	10	3.1%	9	8.8%	9	4.0%	0	0.0%	0	0.0%
TOTAL	325	100.0%	102	100.0%	224	100.0%	33	100.0%	7	100.0%

Recently diagnosed HIV (not AIDS) Cases (DX: January 2009 – December 2010)

*Men having Sex with Men

Epidemiology and Immunization Services, February 2011

Percent may not total 100 due to rounding

**Injection Drug Use

***No Risk Specified/Other Confirmed

**San Diego County Pediatric HIV (not AIDS) Cases
Mode of Transmission by Race/Ethnicity
Reported through December 31, 2010**

	White		Black		Hispanic		Asian/Pac Islander		TOTAL	
	Number	Percent	Number	Percent	Number	Percent	Number	Percent	Number	Percent
Parent at risk/with HIV/AIDS	3	8.3%	7	19.4%	25	69.4%	1	2.8%	36	100.0%
Hemophilia	0	0.0%	1	100.0%	0	0.0%	0	0.0%	1	100.0%
Transfusion	0	0.0%	1	100.0%	0	0.0%	0	0.0%	1	100.0%

Cumulative HIV (not AIDS) Cases (DX: June 1985 – December 2010)

Recently diagnosed pediatric HIV case data is not presented due to small numbers.

**San Diego County Pediatric HIV (not AIDS) Cases
Race/Ethnicity by Mode of Transmission
Reported through December 31, 2010**

	White		Black		Hispanic		Asian/Pac Islander	
	Number	Percent	Number	Percent	Number	Percent	Number	Percent
Parent at risk/with HIV/AIDS	3	100.0%	7	77.8%	25	100.0%	1	100.0%
Hemophilia	0	0.0%	1	11.1%	0	0.0%	0	0.0%
Transfusion	0	0.0%	1	11.1%	0	0.0%	0	0.0%
TOTAL	3	100.0%	9	100.0%	25	100.0%	1	100.0%

Cumulative HIV (not AIDS) Cases (DX: June 1985 – December 2010)

Recently diagnosed pediatric HIV case data is not presented due to small numbers.

Percent may not total 100 due to rounding

Epidemiology and Immunization Services, February 2011

**San Diego County HIV (not AIDS) Cases
By Region*
Reported through December 31, 2010**

	Cumulative Cases		Recent Cases**	
	Number	Percent	Number	Percent
Central San Diego	2938	62.6%	380	54.7%
East County	313	6.7%	55	7.9%
North County	493	10.5%	77	11.1%
South Bay	609	13.0%	127	18.3%
Southeast San Diego	338	7.2%	56	8.1%
TOTAL	4691	100.0%	695	100.0%

*As defined by the HIV, STD, and Hepatitis Branch (HSHB)

**Cases diagnosed during the period January 1, 2009 – December 31, 2010

Percent may not total 100 due to rounding

Epidemiology and Immunization Services, February 2011

**San Diego County HIV (not AIDS) Cases
Gender by Region*
Reported through December 31, 2010**

	Cumulative Cases				Recent Cases**			
	Male		Female		Male		Female	
	No.	%	No.	%	No.	%	No.	%
Central San Diego	2769	65.5%	169	36.3%	360	57.4%	20	29.4%
East County	241	5.7%	72	15.5%	40	6.4%	15	22.1%
North County	408	9.6%	85	18.3%	69	11.0%	8	11.7%
South Bay	529	12.5%	80	17.2%	112	17.9%	15	22.1%
Southeast San Diego	279	6.6%	59	12.7%	46	7.3%	10	14.7%
TOTAL	4226	100.0%	465	100.0%	627	100.0%	68	100.0%

*As defined by the HIV, STD, and Hepatitis Branch (HSHB)

**Cases diagnosed during the period January 1, 2009 – December 31, 2010

Percent may not total 100 due to rounding

Epidemiology and Immunization Services, February 2011

**San Diego County HIV (not AIDS) Cases
Rate per 100,000
By Gender and Race/Ethnicity
Reported through December 31, 2010**

	Cumulative Cases				Recent Cases*					
	Male		Female		Male			Female		
	Number	Percent	Number	Percent	Number	Percent	Rate**	Number	Percent	Rate**
White	2459	58.2%	170	36.6%	299	47.7%	18.8	26	38.2%	1.6
Black	494	11.7%	116	24.9%	93	14.8%	53.2	12	17.6%	7.6
Hispanic	1107	26.2%	161	34.6%	197	31.4%	20.5	28	41.2%	2.9
Asian/Other***	166	3.9%	18	3.9%	38	6.0%	7.8	2	2.9%	#
TOTAL***	4226	100.0%	465	100.0%	627	100.0%	19.7	68	100.0%	2.1

* Cases diagnosed during the period January 1, 2009 through December 31, 2010

** Average yearly rate per 100,000 population over 2009 and 2010, using 2009 population estimates from SanDAG, released January 2010

*** HIV and population data includes individuals of Asian, Pacific Islander and Native American heritage

Unable to calculate rate due to small cell size

Percent may not total 100 due to rounding

Epidemiology and Immunization Services, February 2011

Region: Central San Diego

	Countywide				Region: Central San Diego			
	Cumulative Cases		Recent Cases		Cumulative Cases		Recent Cases	
	No.	%	No.	%	No.	%	No.	%
Mode of Transmission – Adult								
Men having Sex with Men (MSM)	3507	75.4%	506	73.2%	2396	82.1%	310	82.2%
Injection Drug Use (IDU)	288	6.2%	52	7.5%	120	4.1%	23	6.1%
MSM+IDU	319	6.9%	26	3.8%	189	6.5%	16	4.2%
Hemophilia	4	0.1%	0	0.0%	2	0.1%	0	0.0%
Heterosexual	434	9.3%	78	11.3%	164	5.6%	22	5.8%
Transfusion	6	0.1%	1	0.1%	3	0.1%	0	0.0%
No Risk Specified/Other	95	2.0%	28	4.1%	45	1.5%	6	1.6%
Mode of Transmission – Pediatric								
Parent at risk/with HIV/AIDS	36	94.7%	3	75.0%	17	89.5%	2	66.7%
Pediatric Hemophilia	1	2.6%	0	0.0%	1	5.3%	0	0.0%
Pediatric Transfusion	1	2.6%	1	25.0%	1	5.3%	1	33.3%
Race/Ethnicity								
White	2629	56.0%	325	46.8%	1938	66.0%	215	56.6%
Black	610	13.0%	105	15.1%	332	11.3%	49	12.9%
Hispanic	1268	27.0%	225	32.4%	561	19.1%	93	24.5%
Asian/Pacific Islander	148	3.2%	33	4.7%	90	3.1%	20	5.3%
Native American	36	0.8%	7	1.0%	17	0.6%	3	0.8%
Gender								
Male	4226	90.1%	627	90.2%	2769	94.2%	360	94.7%
Female	465	9.9%	68	9.8%	169	5.8%	20	5.3%
Age Group								
0-12	38	0.8%	4	0.6%	19	0.6%	3	0.8%
13-19	108	2.3%	15	2.2%	49	1.7%	4	1.1%
20-29	1587	33.8%	250	36.0%	960	32.7%	128	33.7%
30-39	1705	36.3%	196	28.2%	1127	38.4%	118	31.1%
40-49	927	19.8%	164	23.6%	586	20.0%	93	24.5%
50+	326	6.9%	66	9.5%	197	6.7%	34	8.9%
TOTAL	4691	100.0%	695	100.0%	2938	100.0%	380	100.0%

Epidemiology and Immunization Services, February 2011

Region: East

	Countywide				Region: East			
	Cumulative Cases		Recent Cases		Cumulative Cases		Recent Cases	
	No.	%	No.	%	No.	%	No.	%
Mode of Transmission – Adult								
Men having Sex with Men (MSM)	3507	75.4%	506	73.2%	200	64.7%	34	61.8%
Injection Drug Use (IDU)	288	6.2%	52	7.5%	31	10.0%	6	10.9%
MSM+IDU	319	6.9%	26	3.8%	22	7.1%	2	3.6%
Hemophilia	4	0.1%	0	0.0%	0	0.0%	0	0.0%
Heterosexual	434	9.3%	78	11.3%	51	16.5%	12	21.8%
Transfusion	6	0.1%	1	0.1%	1	0.3%	0	0.0%
No Risk Specified/Other	95	2.0%	28	4.1%	4	1.3%	1	1.8%
Mode of Transmission – Pediatric								
Parent at risk/with HIV/AIDS	36	94.7%	3	75.0%	4	100.0%	0	0.0%
Pediatric Hemophilia	1	2.6%	0	0.0%	0	0.0%	0	0.0%
Pediatric Transfusion	1	2.6%	1	25.0%	0	0.0%	0	0.0%
Race/Ethnicity								
White	2629	56.0%	325	46.8%	178	56.9%	30	54.5%
Black	610	13.0%	105	15.1%	48	15.3%	13	23.6%
Hispanic	1268	27.0%	225	32.4%	77	24.6%	11	20.0%
Asian/Pacific Islander	148	3.2%	33	4.7%	8	2.6%	1	1.8%
Native American	36	0.8%	7	1.0%	2	0.6%	0	0.0%
Gender								
Male	4226	90.1%	627	90.2%	241	77.0%	40	72.7%
Female	465	9.9%	68	9.8%	72	23.0%	15	27.3%
Age Group								
0-12	38	0.8%	4	0.6%	4	1.3%	0	0.0%
13-19	108	2.3%	15	2.2%	12	3.8%	3	5.5%
20-29	1587	33.8%	250	36.0%	106	33.9%	21	38.2%
30-39	1705	36.3%	196	28.2%	103	32.9%	14	25.5%
40-49	927	19.8%	164	23.6%	68	21.7%	13	23.6%
50+	326	6.9%	66	9.5%	20	6.4%	4	7.3%
TOTAL	4691	100.0%	695	100.0%	313	100.0%	55	100.0%

Epidemiology and Immunization Services, February 2011

Region: North

	Countywide				Region: North			
	Cumulative Cases		Recent Cases		Cumulative Cases		Recent Cases	
	No.	%	No.	%	No.	%	No.	%
Mode of Transmission – Adult								
Men having Sex with Men (MSM)	3507	75.4%	506	73.2%	315	64.4%	55	72.4%
Injection Drug Use (IDU)	288	6.2%	52	7.5%	33	6.7%	3	3.9%
MSM+IDU	319	6.9%	26	3.8%	40	8.2%	4	5.3%
Hemophilia	4	0.1%	0	0.0%	1	0.2%	0	0.0%
Heterosexual	434	9.3%	78	11.3%	84	17.2%	9	11.8%
Transfusion	6	0.1%	1	0.1%	0	0.0%	0	0.0%
No Risk Specified/Other	95	2.0%	28	4.1%	16	3.3%	5	6.6%
Mode of Transmission – Pediatric								
Parent at risk/with HIV/AIDS	36	94.7%	3	75.0%	4	100.0%	1	100.0%
Pediatric Hemophilia	1	2.6%	0	0.0%	0	0.0%	0	0.0%
Pediatric Transfusion	1	2.6%	1	25.0%	0	0.0%	0	0.0%
Race/Ethnicity								
White	2629	56.0%	325	46.8%	274	55.6%	40	51.9%
Black	610	13.0%	105	15.1%	48	9.7%	9	11.7%
Hispanic	1268	27.0%	225	32.4%	141	28.6%	20	26.0%
Asian/Pacific Islander	148	3.2%	33	4.7%	24	4.9%	6	7.8%
Native American	36	0.8%	7	1.0%	6	1.2%	2	2.6%
Gender								
Male	4226	90.1%	627	90.2%	408	82.8%	69	89.6%
Female	465	9.9%	68	9.8%	85	17.2%	8	10.4%
Age Group								
0-12	38	0.8%	4	0.6%	4	0.8%	1	1.3%
13-19	108	2.3%	15	2.2%	14	2.8%	0	0.0%
20-29	1587	33.8%	250	36.0%	162	32.9%	29	37.7%
30-39	1705	36.3%	196	28.2%	170	34.5%	14	18.2%
40-49	927	19.8%	164	23.6%	96	19.5%	17	22.1%
50+	326	6.9%	66	9.5%	47	9.5%	16	20.8%
TOTAL	4691	100.0%	695	100.0%	493	100.0%	77	100.0%

Epidemiology and Immunization Services, February 2011

Region: South Bay

	Countywide				Region: South Bay			
	Cumulative Cases		Recent Cases		Cumulative Cases		Recent Cases	
	No.	%	No.	%	No.	%	No.	%
Mode of Transmission – Adult								
Men having Sex with Men (MSM)	3507	75.4%	506	73.2%	378	62.9%	70	55.1%
Injection Drug Use (IDU)	288	6.2%	52	7.5%	78	13.0%	17	13.4%
MSM+IDU	319	6.9%	26	3.8%	45	7.5%	4	3.1%
Hemophilia	4	0.1%	0	0.0%	0	0.0%	0	0.0%
Heterosexual	434	9.3%	78	11.3%	78	13.0%	21	16.5%
Transfusion	6	0.1%	1	0.1%	2	0.3%	1	0.8%
No Risk Specified/Other	95	2.0%	28	4.1%	20	3.3%	14	11.0%
Mode of Transmission – Pediatric								
Parent at risk/with HIV/AIDS	36	94.7%	3	75.0%	8	100.0%	0	0.0%
Pediatric Hemophilia	1	2.6%	0	0.0%	0	0.0%	0	0.0%
Pediatric Transfusion	1	2.6%	1	25.0%	0	0.0%	0	0.0%
Race/Ethnicity								
White	2629	56.0%	325	46.8%	141	23.2%	27	21.3%
Black	610	13.0%	105	15.1%	75	12.3%	21	16.5%
Hispanic	1268	27.0%	225	32.4%	373	61.2%	75	59.1%
Asian/Pacific Islander	148	3.2%	33	4.7%	15	2.5%	3	2.4%
Native American	36	0.8%	7	1.0%	5	0.8%	1	0.8%
Gender								
Male	4226	90.1%	627	90.2%	529	86.9%	112	88.2%
Female	465	9.9%	68	9.8%	80	13.1%	15	11.8%
Age Group								
0-12	38	0.8%	4	0.6%	8	1.3%	0	0.0%
13-19	108	2.3%	15	2.2%	23	3.8%	8	6.3%
20-29	1587	33.8%	250	36.0%	231	37.9%	45	35.4%
30-39	1705	36.3%	196	28.2%	194	31.9%	34	26.8%
40-49	927	19.8%	164	23.6%	108	17.7%	31	24.4%
50+	326	6.9%	66	9.5%	45	7.4%	9	7.1%
TOTAL	4691	100.0%	695	100.0%	609	100.0%	127	100.0%

Epidemiology and Immunization Services, February 2011

Region: Southeast San Diego

	Countywide				Region: Southeast San Diego			
	Cumulative Cases		Recent Cases		Cumulative Cases		Recent Cases	
	No.	%	No.	%	No.	%	No.	%
Mode of Transmission – Adult								
Men having Sex with Men (MSM)	3507	75.4%	506	73.2%	218	65.1%	37	66.1%
Injection Drug Use (IDU)	288	6.2%	52	7.5%	26	7.8%	3	5.4%
MSM+IDU	319	6.9%	26	3.8%	23	6.9%	0	0.0%
Hemophilia	4	0.1%	0	0.0%	1	0.3%	0	0.0%
Heterosexual	434	9.3%	78	11.3%	57	17.0%	14	25.0%
Transfusion	6	0.1%	1	0.1%	0	0.0%	0	0.0%
No Risk Specified/Other	95	2.0%	28	4.1%	10	3.0%	2	3.6%
Mode of Transmission – Pediatric								
Parent at risk/with HIV/AIDS	36	94.7%	3	75.0%	3	100.0%	0	0.0%
Pediatric Hemophilia	1	2.6%	0	0.0%	0	0.0%	0	0.0%
Pediatric Transfusion	1	2.6%	1	25.0%	0	0.0%	0	0.0%
Race/Ethnicity								
White	2629	56.0%	325	46.8%	98	29.0%	13	23.2%
Black	610	13.0%	105	15.1%	107	31.7%	13	23.2%
Hispanic	1268	27.0%	225	32.4%	116	34.3%	26	46.4%
Asian/Pacific Islander	148	3.2%	33	4.7%	11	3.3%	3	5.4%
Native American	36	0.8%	7	1.0%	6	1.8%	1	1.8%
Gender								
Male	4226	90.1%	627	90.2%	279	82.5%	46	82.1%
Female	465	9.9%	68	9.8%	59	17.5%	10	17.9%
Age Group								
0-12	38	0.8%	4	0.6%	3	0.9%	0	0.0%
13-19	108	2.3%	15	2.2%	10	3.0%	0	0.0%
20-29	1587	33.8%	250	36.0%	128	37.9%	27	48.2%
30-39	1705	36.3%	196	28.2%	111	32.8%	16	28.6%
40-49	927	19.8%	164	23.6%	69	20.4%	10	17.9%
50+	326	6.9%	66	9.5%	17	5.0%	3	5.4%
TOTAL	4691	100.0%	695	100.0%	338	100.0%	56	100.0%

Epidemiology and Immunization Services, February 2011